



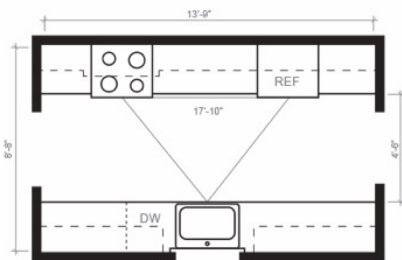
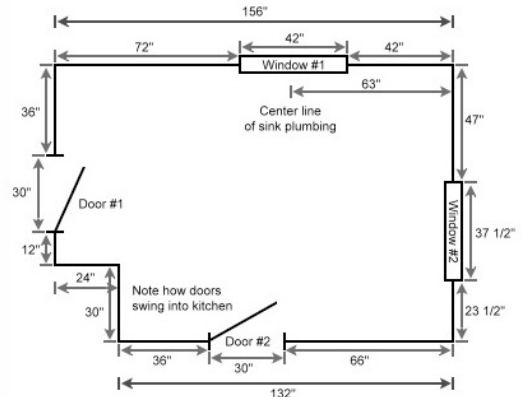
JESSEN CABINETS

BEST RTA CABINETS WITH GREAT SERVICE

HOW TO MEASURE YOUR KITCHEN

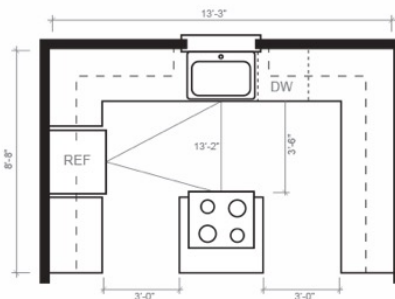
Tips for measuring your kitchen

1. Draw a rough sketch of your kitchen.
2. Measure every wall, beginning at the left corner. Write down the total measurement in inches.
3. Go back and measure from the left corner to the edge of any opening, such as a window or door.
4. Measure across the opening from outside edge of trim to outside edge of trim.
5. Measure from that trim edge to the far wall. Go back and total the measurements from steps 3,4 and 5. They should equal the measurement in step 2.
6. Mark on your sketch, the exact location of the sink, water and gas lines, wall switch and receptacles, and any other obstructions in the room. Be sure to measure to the center of these and not the edge.
7. Measure from the floor to the bottom of your windows and mark it down.
8. Then measure from the bottom of the window to the top of the window. Always from outside edge of trim.
9. Measure from the top of the window to the ceiling and mark it down.
10. Measure from the floor to the ceiling. Total the measurements from steps 7, 8 and 9. They should equal this measurement.
11. If you haven't already, measure the width of any doors, from outside of trim to outside of trim.
12. Indicate on your sketch how each door swings (in to or out of the room and which side the hinge is on).
13. Measure all other walls in kitchen following steps 2 through 12. Measure all walls even if you do not plan to put cabinets on them (this is important for us to present you with a proper design).
14. Measure all appliances including stove, refrigerator, microwave, dish washer and sink.
15. Double check your work. These measurements must be 100% correct for your new cabinetry to fit correctly.



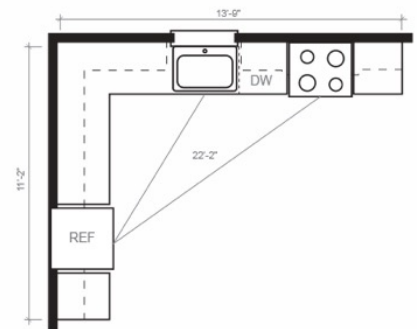
GALLEY KITCHEN

Galley kitchens allow for additional food preparation and storage area.



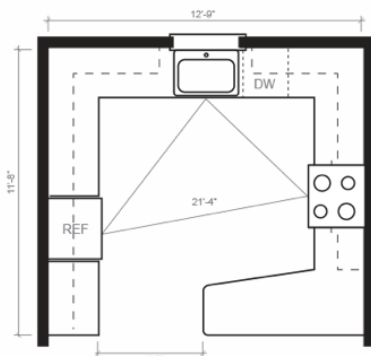
ISLAND KITCHEN

If space allows, adding an island to your kitchen allows you to have extra storage, and additional counter/entertainment space or even relocate your oven/range.



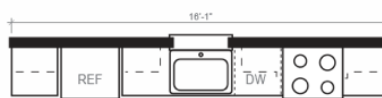
"L" SHAPED KITCHEN

L-shaped kitchens make the most of a corner. The use of the corner allows for an addition of a dining table or island.



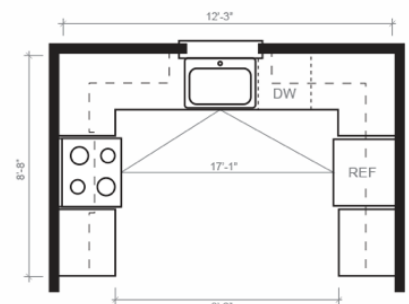
PENINSULA KITCHEN

This layout allows homeowners additional work area and additional dining and entertainment space.



STRAIGHT-LINE KITCHEN

When space is limited, Straight-line kitchens are a good solution.



"U" Shaped Kitchen

U-Shaped layouts allow for plenty of storage options and work surfaces.